

# LONGSHOREMEN



I.L.W.U. ■ CANADIAN AREA



## WATERFRONT NEWS

February, 1982

# LONGSHORE NEGOTIATIONS

It was reported in the last bulletin from the Canadian Area negotiating committee that after 11 meetings with the BCMEA that the actions to clear the decks of the Canada Labour Code restrictions were put into motion.

The Honourable John Caccia, Federal Labour Minister, was requested by the union to waive the procedures of the Labour Code and allow head-to-head, no-holds-barred, nego-

tiations between the parties. The employer group wrote the Minister requesting that the procedures not be waived.

The Minister in his wisdom decided in favour of the employer group and appointed Mike Collins, Industrial Relations Consultant, to act as conciliation officer to see if he could assist the parties in obtaining a collective agreement. The union and the employer group met with Collins

together and then separately. The union articulated the position agreed upon by the negotiating team; have no knowledge of what the employers said, and in the final analysis Collins instructed the union he would give them an answer as to where it was at by Friday, February 5, 1982.

As we go to press, we have not received an answer.

So there are interesting times ahead.

Busy times but fulfilling times. If everyone keeps a cool head we should come out of this in a standup position with a collective agreement we can all be proud of. If there are any disruptive forces around step on their necks and squash them like the snakes they are. Anyone sowing disunity at the stage of the game is no friend of the ILWU's. So get geared up, act wisely, we will be calling on all of you for help and we know you will come through.

## OTHER NEGOTIATIONS

Further to the ILWU-BCMEA Industry negotiations the union is involved in the following discussions:

**Local 502 New Westminster** — Negotiations with "Westshore" covering all production workers at Roberts Bank. Some progress being made. The contract expired January 31, 1982 covering 65 members.

**Local 514 Foremen** — Negotiations with Waterfront Foremen Employers Association. Contract expired December 31, 1981. Contract with Westshore for Foremen at Roberts

Bank also expired the same date. Contracts cover 450 members in total.

**Local 517** — Negotiations for office staff employees at Squamish Terminal, Fraser Surrey and Westshore. All contracts have expired and involve 20 members.

**Local 518 Testers** — Negotiations commencing for monetary items only. Contract expired December 31, 1981. 28 members involved with two companies — General Testing and Commercial Testing.



W. Duncan, Local 508



M. Marino, Local 500



G. Snelling, Local 504



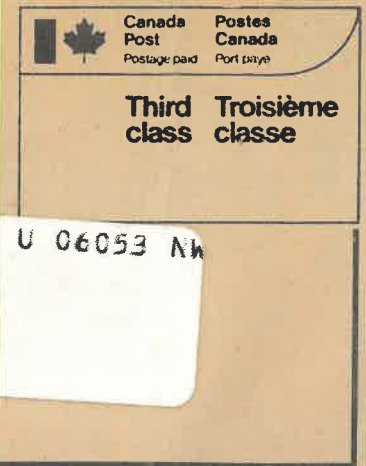
L. Kaufman, Local 500



W. Kemp, Local 500



L. Mannix, Local 503



### ILWU CANADIAN AREA 1982 CONVENTION CALL

The ILWU Canadian Area Executive Board by unanimous decision agreed to convene the 1982 convention on:

MARCH 15, 1982 at the  
ROYAL TOWERS HOTEL, 6TH & ROYAL, NEW WESTMINSTER, B.C.

Deadline for resolutions — March 5, 1982

## WATERFRONT NEWS

INTERNATIONAL LONGSHOREMEN'S AND WAREHOUSEMEN'S UNION  
CANADIAN AREA

AN INJURY TO ONE IS AN INJURY TO ALL



FRANK KENNEDY — EDITOR  
2681 EAST HASTINGS STREET  
VANCOUVER, B.C. V5K 1Z5

PRESIDENT  
1ST VICE PRESIDENT  
2ND VICE PRESIDENT  
3RD VICE PRESIDENT  
SECRETARY TREASURER

D.P. GARCIA  
D.C. LOMAS  
W. GALLIC  
A. JOHNSON  
F. KENNEDY

## I.L.W.U. SCHOLARSHIPS

The 1981-82 ILWU scholarships have been awarded to the following successful candidates:

### Undergraduate Scholarships

Judith Ann Look — Daughter of R.N. Look, Local 500  
Barbara Anne Oman — Daughter of R. Oman, (retired) Local 508  
Cathy Jean Oliver — Daughter of W. Oliver, Local 500  
**Thomas P. Mayes Scholarship**  
Dean Turpin — Son of L. Turpin, Local 500

**Entrance Scholarships**  
Danny A. Effa — Son of O. Effa (retired), Local 504  
Suzanne Simpson — Daughter of W. Simpson, Local 508  
Jennifer Lynn Hemmerling — Daughter of R. Hemmerling, Local 514

**Vocational School Scholarship**  
Dan Sauve — Son of R. Sauve, Local 514

The ILWU Canadian Area membership extends best wishes to the successful candidates and thank all the candidates for their participation and wish them success in the future.

Following is the information relative to the ILWU Scholarships:

The University of British Columbia Scholarships and Bursaries Department will be publishing a yearly calendar this Spring, outlining Scholarships made available by this Union.

All applications for a Scholarship must be made through Byron Hender's office at UBC. Phone 228-5111.

Deadline for applications is **July 1st, 1982.**

As long as you are a member or a dependant of a member of the ILWU, you are entitled to make application for one of the following:

### #4718 — ENTRANCE SCHOLARSHIPS

Four scholarships of \$500 each are offered to members, and sons and daughters of members, in good standing, of the International Longshoremen's and Warehousemen's Union. They will normally be awarded to the candidates who obtained the highest standing based on high school graduation, and who are commencing a full programme of studies at the University of British Columbia, the University of Victoria, Simon Fraser University, the B.C. Institute of Technology, or a regional college in B.C. The donors reserve the right to withhold awards if the academic standing of the candidates is not sufficiently high or to reallocate the scholarships if winners receive other major awards.

### #0530 — UNDERGRADUATE

The International Longshoremen's and Warehousemen's Union Undergraduate Scholarships — Three scholarships of \$350.00 each are offered to members, and sons and daughters of members, in good standing, of the International Longshoremen's and Warehousemen's Union. They are open to students in attendance at the University of B.C., the University of Victoria, Simon Fraser University, or any regional college, who will continue in a full programme of studies in the next session in an undergraduate faculty. These scholarships will normally be awarded to the candidates with highest standing as determined by the results of the Final Sessions Examinations conducted in April by the named universities. Candidates must notify the University Awards Committee by May 1st of their intention of competing. The donors reserve the right to withhold awards if the academic standing of candidates is not sufficiently high or to re-award scholarships if winners receive other scholarships of substantial value.

### #0558 — THOMAS P. MAYES

The Thomas P. Mayes Scholarship — in memory of Thomas P. Mayes, who until his death in 1968, served as secretary of the Union. The International Longshoremen's and Warehousemen's Union offers an undergraduate scholarship of \$350.00 to members, and sons and daughters of members, in good standing. The terms and conditions of award are the same as for the three International Longshoremen's and Warehousemen's Union Undergraduate Scholarship.

### VOCATIONAL SCHOOL

The International Longshoremen's and Warehousemen's Union will be awarding two (2) Vocational School Scholarships of \$400.00 each in 1982. Those wishing to make applications for one of these scholarships must notify the ILWU Canadian Area Executive Board who will determine the successful applicants.

### ADDITIONAL ENTRANCE SCHOLARSHIP

One further \$500 Entrance Scholarship will be available this year for an ILWU member's son or daughter, supplied by the BCMSEA from a Bursary made to the Vancouver Foundation in memoriam to Wm. Hurford, who for many years was an active Director of Seaboard and Anglo-Canadian Shipping. This will be written in to the UBC Calendar similar to the ILWU Entrance Scholarships.

## LABOUR STUDIES

The following courses are made available by Caplano College through their Labour Studies Programme.

We are publishing these courses for our membership's information at this time because the B.C. Federation of Labour and the CLC have taken action to discourage their affiliated unions from participating. It appears that non affiliated unions are also taking the courses and in some cases representation from non affiliates are instructors. Check with Betty Merrill or Ed Lavalle for further information 986-1911 Local 334.

*Labour Economics* — March 4, 11, 18, 25; April 1, 8, 15, 22. Place: Longshore Hall, Local 500, 1685 Franklin, Van. B.C.

*B.C. Labour Code* — March 3, 10, 17, 24, 31; April 7, 14, 21. Place: Britannia Community Centre, 1661 Napier, Van. B.C.

*Workers Compensation Act and WCB* — March 3, 10, 17, 24, 31; April 7. Place: CUPW, 950A Richards Street, Van. B.C.

*Race and Ethnic Relations* — March 9, 16, 23, 30; April 6, 13, 20, 26. Place: Britannia Community Centre, 1661 Napier, Van. B.C.

*History of the Labour Movement in Canada* — March 2, 9, 16, 23, 30; April 6, 13, 21. Place: Fishermen's Union, 138 E. Cordova, Van. B.C.

*Communications: Public Speaking and Parliamentary Procedures* — March 1, 8, 15, 22, 29; April 12, 19, 26. Place: Britannia Community Centre, 1661 Napier, Van. B.C.

*Women's Leadership Skills: Assertiveness and Advocacy* — March 1, 8, 15, 22, 29. Place: Hospital Employees Union, 2286 W. 12th, Van. B.C.

*Practical Skills for Union Involvement Part III of "Women and Power in Trade Unions"* — April 1, 8, 15, 22, 29; May 6, 13, 20. Place: Hospital Employees Union, 2286 W. 12th, Van. B.C.

*Costing Out Contract Proposals and Settlements* — Saturday and Sunday, March 13, 14. Place: NE 101, North Campus, Caplano College, 2055 Purcell Way, North Vancouver, B.C.

*Video Display Terminal Health and Safety* — Saturday and Sunday, April 24, 25. Place: ND 101, North Campus, Caplano College, 2055 Purcell Way, North Vancouver, B.C.

## I.L.W.U. SAFETY SEMINAR

There have been two safety seminars concluded with the participation of the MOT. These seminars covered Gear and Tackle Regulations and Safe Working Practices. The one seminar on Vancouver Island and the other for the Lower Mainland each covered two

days and had a total of 135 participants. Ship Safety Regulations were reviewed and tours of Stevedore Company Gear Lockers were held. The next seminar is slated for Prince Rupert towards the later part of February.



Delegates to Safety Seminar held in Nanaimo: Front — Steve Bushell, Local 500; Left to right: Larry Mannix, Local 503, J. Johnstone, Local 508.

## B.C. FEDERATION OF LABOUR

### STRIKES

GRAPHIC ARTS INTERNATIONAL UNION, Local 210 & Typex Graphics Ltd. (Vancouver). Major Issue: Union Security Language. Commenced: February 20, 1979.

B.C. PROJECTIONISTS, Local 348 & Golden Harvest Theatre (Vancouver). Major Issue: COLA Clause. Commenced: September 2, 1979.

STEELWORKERS, Local 8637 & Afion Mines (Teck Corporation). Major Issue: Wages. Commenced: November 20, 1981.

### BOYCOTTS

The following consumer boycotts have been endorsed by the Officers of the Federation:

#### Husky Oil — IWA

Husky House Restaurants, Husky Service Centres and various brands of charcoal briquettes (Royal Oak, Cliffchar, Charketts, Grill Time, Star Grill, Sparky and Sparky Lighter Fluid, and Hickory Chips).

#### Red Coach Lettuce — C.L.C.

Michelin Tire — C.L.C.

## INTERNATIONAL OFFICERS AND EXECUTIVE MEET IN VANCOUVER

The ILWU president James Herman and Executive Board met with the newly elected officers and executive of Local 500 and administered the oath of office to the new executive. The members of the International Executive Board were in Vancouver, B.C. at the time at a regular executive

meeting.

The swearing in of the Local 500 executive was the first time an International officer has sworn in a new Local 500 executive since secretary-treasurer emeritus Lou Goldblatt administered the oath to the first officers and executive of Local 500 in 1967.



Left to right: Local 500 members P. Brown, D. Karanko, B. Campbell, T. Brown, A. Tomi.



Left to right: Don Liddle, Pres. Marin, Div. ILWU; B. Johnson, Area Vice/Pres.; D. Howard, Local 500; Curtis McLean, Int. Sect./Treasurer.



Left to right: Bob Peebles, Local 514; Vince Brunt, Local 500; Dan Cole, Local 500; Jim, Local 500.

## 1982 LOCAL OFFICERS

**ILWU Local 500**  
 President — Lou Kaufman  
 Vice President — Jack Gregg  
 Sect./Treasurer — Dan Cole  
 B.A.'s — Don Somerville  
 Bill Kemp  
 Jim Keith

**ILWU Local 502**  
 President — Gerry White  
 Vice President — Brian Ross  
 Sect./Treasurer — Jim Hoskins  
 B.A.'s — Ron Noullette  
 Don Skoyen

**ILWU Local 503**  
 President — Willard Gallie  
 Vice President — Larry Mannix  
 Sect./Treasurer — Brian Hemmingsen  
 2nd V/P — Clare Nordmann  
 Dispatcher — Brian Hemmingsen  
 2nd Dispatcher — Lorne Jorgensen

**ILWU Local 504**  
 President — Gus Snelling  
 Vice President — Ron Dwyer  
 Sect./Treasurer — Ed Seymour  
 Dispatcher — Ed Seymour

**ILWU Local 505**  
 President — Stan Dahlgren  
 Vice President — Ray Mitchell  
 Sect./Treasurer — A. Waxweiler  
 Dispatcher — A. Waxweiler

**Local 506**  
 President — Ralph Graham  
 Sect./Treasurer — Ray Duncan

**ILWU Local 508**  
 President — Bill Duncan  
 Vice President — Al Saunders  
 2nd V/P — James Johnson  
 Sect./Treasurer — Dave Strom  
 Dispatcher — Dave Strom  
 2nd Dispatcher — Ron Mirus

**ILWU Local 514**  
 President — Doug Sigurdson  
 Vice President — Don Parr-Pearson  
 Sect./Treasurer — Charles McIntosh

**ILWU Local 515**  
 President — Howard Green

**ILWU Local 517**  
 President — John Talbot  
 Sect./Treasurer — Linda Van  
 Koughnet

**ILWU Local 518**  
 President — Leif Nielsen  
 Sect./Treasurer — Robin Middleton

**ILWU Local 519**  
 President — Frank Morrison  
 Sect./Treasurer — Howard Schindell

## CERTIFICATION REFUSED TO LOCAL 520

The Canada Labour Relations Board has refused to grant the Dispatchers presently employed by the BCMEA certification for bargaining rights.

The local union requested and was granted a Charter by the ILWU Canadian Area on April 8, 1981. Following that, an application for certification as a union was forwarded to the CLRB.

The CLRB meeting in Vancouver on October 20-21, 1981, heard the presentation from the union and the BCMEA and subsequently notified the union on November 4 that:

"The BCMEA serves one purpose — the labour relations interests of its several member companies. The Board concluded that in the longshoring industry manpower allocation is a critical day-to-day function that is understandably performed by an employers'

organization rather than foremen or others employed by individual employers. The Board considered that function in the longshoring industry to be so basic to the existence of the employers' organization that those who perform it are not to be treated as employees under the Code. The application for certification was therefore dismissed."

The union then requested the full Canada Labour Relations Board to review their decision. On January 25, 1982, Local 520 was informed by the CLRB that: "The application for review is dismissed."

This was the second attempt by the Dispatchers to attain certification for purposes of achieving the right to negotiate a collective agreement. The first attempt was by ILWU Local 500 in 1971.

## ROBERTS BANK

Visible evidence of the expansion of Roberts Bank outport can be seen as reclaimed land rises above the sea in the first stage of the construction which will enlarge the port to four times its present size.

Dillingham-Sceptre Joint Venture's dredges, the Sceptre Fraser and the King Edward, have removed nearly 3,000,000 cubic metres of sand from the future ship basin. This material has been pumped through a combination of floating and submerged pipelines which have been pushed under the causeway road and railway tracks and deposited on the sea bottom west of the present terminal.

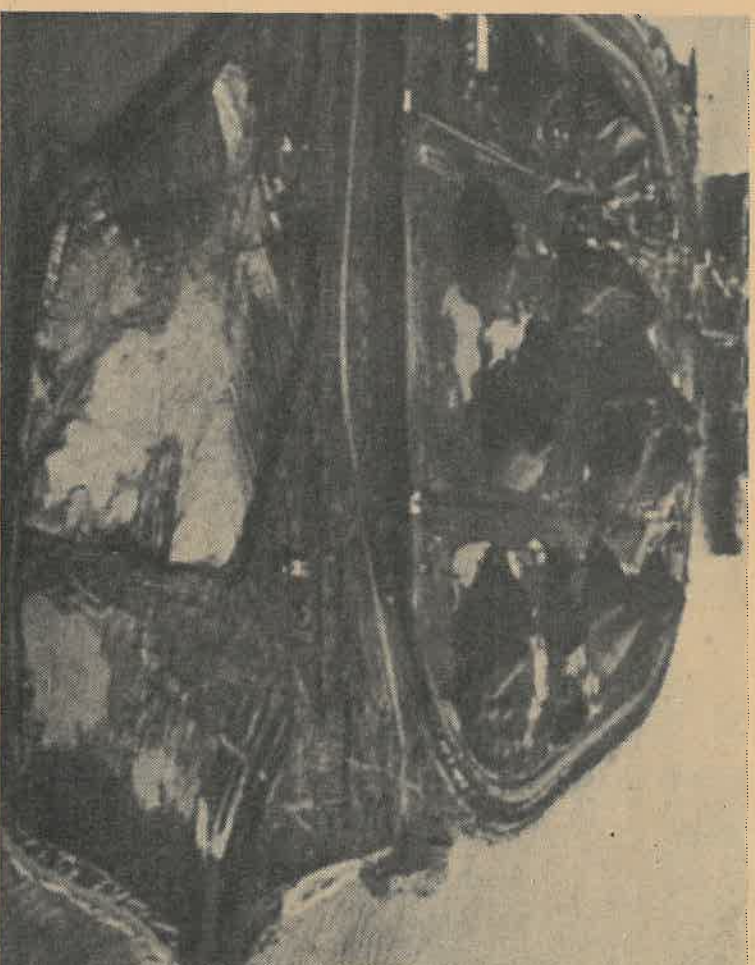
At the same time, approximately 160,000 tonnes of gravel and rock have been placed around part of the perimeter of the future terminal to retain the fill and protect its slopes from storms. Gravel for this bank protection is shipped by scow from the Port's underwater stockpiles at Lions Gate Bridge, and blasted rock is scowed from the contractor's quarry on the Fraser River above New Westminster.

On-site monitoring of the dredging operations by biologists employed by

the Port provides information on the impacts of the dredging on marine life and its habitat for the Department of Fisheries and Oceans. Extensive studies aimed at evaluation of these impacts are also being undertaken by Fisheries and Oceans with the co-operation of the Port.

In preparation for expansion of its coal shipping facilities into part of the new reclaimed land, Westshore Terminals, the present terminal operator, has carried out engineering and is preparing plans for a new shipping dock and for expanded coal handling facilities.

Dredging will continue throughout the winter until the end of February and resume again in September 1982. During this interval, if dredging were to continue, damage could occur to marine life and the Port has co-operated with the Fisheries Department in minimizing this damage by postponing dredging during the season when marine biology in the area is most active. Meanwhile, work on the protection of banks of the reclaimed land and the building of roads and other facilities will continue.



Just 2½ months of dredging has produced partial completion of the first of three new terminal pads at the Roberts Bank superport. (Port of Vancouver News)

# BEREAVEMENT LEAVE

As a reminder to those of our members who are covered under the ILWU-BCMEA collective agreement and unfortunate enough to have a death in their immediate family, the following applies:

- Bereavement Leave covers all in the industry who have worked at least 85% of the total average union member hours of his local.
- An applicant must provide proof of relationship (if necessary) and the death certificate must accompany the Bereavement Leave form that can be obtained from your local secretary.
- Bereavement Leave applies on the death of an immediate family member which is defined as your: spouse,

parents, children, sister, brother, father-in-law, mother-in-law, or any relative permanently residing in your household, or with whom you reside.

- The payment is 2.143 days pay (\$268.95 for 1981) and is treated as a straight cash payment for each bereavement occasion.
- We have revised the application period from 90 days from the date of death to 120 days from the date of death. There will be no consideration for payment after the 120 day period so if there are problems getting the required documentation fill out the form with your local secretary within the 120 day period and forward the documents as soon as possible.

# LABOUR CONCERTS

The Ash Street Players are proud to announce three concerts in the spring of 1982. Each concert will highlight world class artists along with local artists.

**PETTE SEEGER - SINGS FOR PEACE**  
Saturday, March 6th, 8:00 p.m., Queen Elizabeth Theatre.

**EARL ROBINSON (Composer of 'Joe Hill') - SALUTE TO LABOUR**  
Sunday, April 4th, 2:00 p.m., Queen Elizabeth Playhouse.

**ODETTA - SALUTE TO PAUL ROBESON**  
Sunday, May 16th, 2:00 p.m., Queen Elizabeth Playhouse.

Tickets can be purchased at Concert Box Offices, 501 West Georgia Street, Vancouver; all Lower Mainland Woodwards Stores, UBC AMC and Nanaimo Ticket Centre.

For more information please contact CBO at 687-2801 or Dave Watt, Ash Street Players at 987-1691.

# I.L.W.U. SUPPORTS FARMWORKERS

The ILWU Canadian Area Executive Board moved to support the Canadian Farmworkers Union by demanding the Provincial government recognize the workers' rights to Workers' Compensation when injured while at work and the right to organize and negotiate collective agreements.

- Two tragic incidents in the agriculture industry in the Fraser Valley, British Columbia in July 1980. A seven month old farmworker's baby died when she rolled off a bed into a bucket of drinking water in a farmer's cabin.

Three farmworker's boys, ages 7, 9 and 11 years drowned in an open gravel pit while their parents worked on a nearby field.

- Racist attacks on farmworkers in

the Okanagan Valley, British Columbia, in July 1980. Housing standards are virtually non-existent, workers live in campsites or on river banks.

- At least one death is taking place on Ontario farms per week. Regulations concerning pesticides in Ontario provide no protection for the health and safety of farmworkers.

Farmworkers throughout Canada work under intolerable conditions.

Much of their housing is unfit for human habitation. They work long hours for extremely low wages. In some areas as in B.C. they are also exploited by labour contractors who take 25-40 percent of their wages for providing transportation.

# RETIRED MEMBERS

Number	Name	Date of Retirement	Age	Date of Death
01837NW	A. Smith	Jan. 1, 1968	76-7	Aug. 30, 1981
01182VA	H. Newman	Jul. 1, 1973	69-2	Sept. 13, 1981
04607PA	P. Conway	Jul. 1, 1977	67-4	Sept. 22, 1981
06572VA	J. Pearson	Jan. 1, 1977	66-7	Sept. 23, 1981
03912CH	E. White	Sept. 1, 1977	69	Sept. 27, 1981
08425VA	W. Oakes	Jan. 1, 1966	81	Oct. 13, 1981
0847VA	R. Smart	Jan. 1, 1963	83-9	Oct. 16, 1981
01233VA	O. Hedstrom	Dec. 1, 1970	75-11	Oct. 24, 1981
04301NW	M. Madland	Mar. 1, 1978	68-7	Oct. 27, 1981
08473NW	B. Smith (Mrs.)	Sept. 1, 1963	76	Nov. 2, 1981
04728NW	W. Bettcher	Mar. 1, 1968	78-7	Nov. 3, 1981
08218VA	R. Barrager	Jul. 1, 1963	83-7	Nov. 5, 1981
05024VA	W. Dale	Jul. 1, 1971	75-7	Nov. 26, 1981
04800VA	N. Watt	Feb. 1, 1976	70-9	Nov. 26, 1981
02494VA	J. Weatherall	Dec. 1, 1981	58-7	Nov. 28, 1981
06425VA	C. Skinty	Dec. 1, 1981	60-1	Dec. 7, 1981
08424VI	T. Newnham	Jul. 1, 1966	80-2	Dec. 11, 1981
00945VA	J. Vinet	Oct. 1, 1981	65-2	Dec. 12, 1981
06577VA	S. Ruptash	Oct. 1, 1981	66-2	Dec. 12, 1981

# TRAINING FACILITY

Construction of the world's most modern facility for training dock workers is nearing completion at the Port of Hamburg, West Germany. When finished next summer, the complex will include a working model of a ship built on land.

The ship, permanently "moored" next to the actual school buildings, is 118 feet long, 49 feet wide and nearly 20 feet high. It is designed to provide realistic port situations and includes a hatch and ramp for roll-on/roll-off exercises as well as on-board and land-based cranes.

Built by the Port of Hamburg General Operations Corporation, the new technical school is expected to be in full service by July, 1982. It is an-

ticipated that the complex will attract considerable attention from other ports around the world and already, a number of inquiries concerning use of the training facility have been received from overseas, Hamburg officials have revealed.

The school is the latest effort undertaken by the Port of Hamburg to improve and expand services offered to the harbor. For many years, the port has provided comprehensive training of its workers and the new school will allow even greater opportunities in this area, it is believed.

The new facility is located next to the Koehlbrand Bridge and adjacent to the free port zone.

# HEALTH & WELFARE CANADA INCOME SECURITY 1982

A. CANADA PENSION PLAN	
1. Retirement Pension	Eligibility - a) must have contributed and b) must be 65 years of age Amount of pension - 25% of current value of average monthly pensionable earnings Maximum monthly Retirement pension is - \$ 307.65
2. Survivor's Benefits	Eligibility - a) deceased must have contributed one-third of years since 1966 or since age 18 and b) minimum of 3 years contributions 1) Death Benefit - payable to the estate of a deceased contributor Amount - six times current value of a retirement pension but not exceeding 10% of the years maximum pensionable earnings. 2) Spouse's pension - payable to an eligible spouse of a deceased contributor Amount of pension: Spouse under 65 - flat rate component of \$70.68 plus 3 1/2% of current value of retirement pension Maximum monthly pension is \$ 186.05 Spouse age 65 - 60% of current value of retirement pension Orphan's monthly pension is \$ 184.59
3. Disability Benefits	Eligibility - a) must have contributed in at least 5 of the last 10 years and if you were born prior to 1949 you also need at least 1 additional year and b) must be determined to be disabled within the meaning of the Canada Pension Plan legislation. Amount of Disability - flat rate component of \$70.68 a month plus 75% of current value of the retirement pension. Maximum monthly Disability pension is \$ 301.42 Benefits for dependent children are \$ 70.68
B. OLD AGE SECURITY BENEFITS	Eligibility - a) must meet the residence requirements b) must be age 65 Basic full Old Age Security Pension is \$ 227.73 Guaranteed Income Supplement (Maximum amount those who are 65 or over receive) is \$ 228.63 Spouse's Allowance - \$ 176.27 a) Spouse's Allowance - \$ 404.00 b) Married couple, both pensioners - \$ 404.00 c) Spouse's Allowance - \$ 404.00 NOTE - The basic Old Age Security Pension, the Guaranteed Income Supplement and the Spouse's Allowance are increased quarterly if the cost of living goes up.
C. FAMILY ALLOWANCES	- rate per child is \$ 26.91 The maximum Child Tax Credit per child is \$ 261.00

# DECEASED PENSIONERS

Number	Name	Age	Years of Service	Date of Retirement
NW04301	M. Madland	65	16	Mar. 1, 1981
VA033580	W. Joe	61-3	15	July 1, 1981
VA01329	J. Fennell	60-5	26	Jul. 1, 1981
VA01202	H. Whiting	65	35	Sept. 1, 1981
VA06313	A. Juul	65	18	Sept. 1, 1981
VA05041	E. Elliot	64-2	22	Sept. 1, 1981
VA01638	W. Zygmunt	65	18	Sept. 1, 1981
VA00945	D. Larade	59-4	32	Oct. 1, 1981
VA00544	J. Vinet	65	25	Oct. 1, 1981
VA00570	S. Wood	65	48	Oct. 1, 1981
NW00060	N. Gunther	65-1	20	Oct. 1, 1981
VA01243	R. Cole	56-1	18	Nov. 1, 1981
VA06057	J. Wisniewski	65	22	Nov. 1, 1981
VA12574	E. Beemish	62-10	29	Nov. 1, 1981
V101584	R. Bertelli	65	11	Dec. 1, 1981
NW01952	B. Borgen	65	25	Dec. 1, 1981
NW05430	M. Medelko	65	22	Dec. 1, 1981
VA06425	L. Brochu	65	21	Dec. 1, 1981
VA02779	C. Skinty	60-1	27	Dec. 1, 1981
VA02494	J. McKellar	64	20	Dec. 1, 1981
VA05614	J. Weatherfall	58-7	28	Dec. 1, 1981
NW16157	H. Porter	64-10	32	Jan. 1, 1982
	F. Hartmann	62-2	10	Jan. 1, 1982